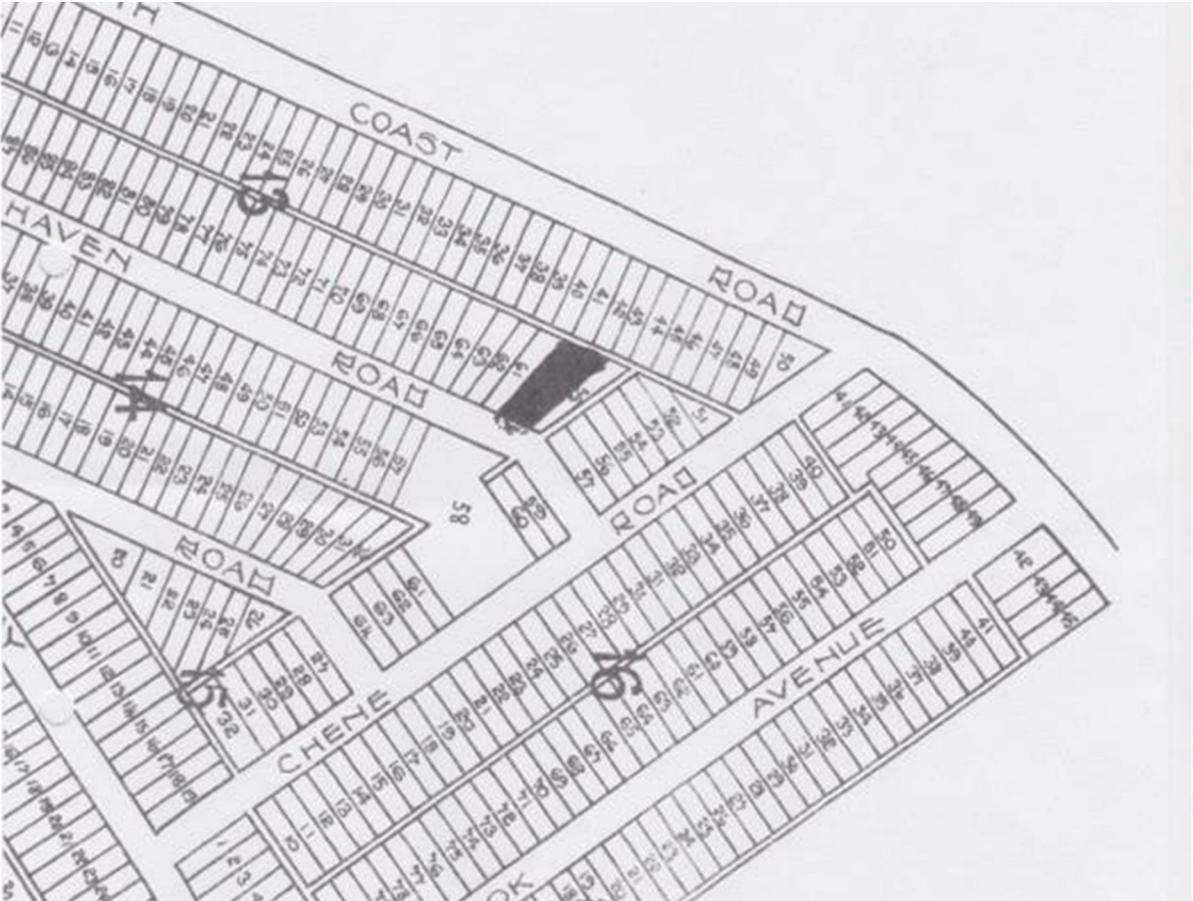


Chene Road, Peacehaven, BN10 8XG

Auction Guide £10,000

Council Tax Band:

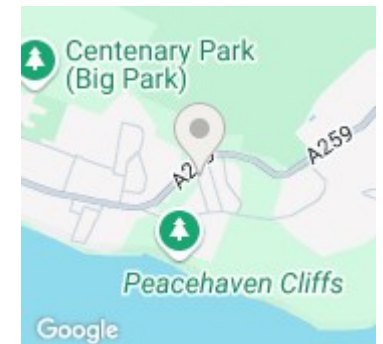


land being Plots Number 59 and 60 in Block Number 13 situate on the West side of and having a total frontage of thirty eight feet or thereabouts to a road called Haven Road and having a total width at the rear of fifty six feet, Plot Number 59 having a depth on the North side from such road of One hundred and twenty two feet and Plot Number 60 having a depth on the South side of One hundred and fifteen feet or thereabouts situate in the Parish of Piddinghoe in the County of Sussex and more particularly delineated and described on the plan printed on a Conveyance dated the Seventh day of April One thousand nine hundred and twenty four and made between South Coast Land and Resort Company Limited of the one part and the said Clara Fisher of the other part and thereon coloured pink TOGETHER with a right of way at all times

An OPPORTUNITY has arisen to acquire this parcel of LAND with an approximate depth of 122ft , and a combined frontage with plot 60 of 38ft and a combined rear measurement of 56ft. Located on PEACEHAVEN HEIGHTS this land offers easy access to Seaford, Brighton Marina and Lewes to the north. Peacehaven Heights is situated approximately 9 miles from Brighton to the West and 5 miles from Seaford to the East. The plots are approximately a mile of the town centre with its shopping facilities and railway station and has excellent road links to all surrounding areas via the A27 / A259. This vacant plot of land may at some point in the future have potential for residential development (subject to necessary consents), but at this moment in time just holds a speculative or enjoyment value.



206 South Coast Road, Peacehaven, East
 Sussex, BN10 8JP
 01273 830 987
 bnsales@localagent.co.uk



Energy Efficiency Rating		
	Current	Potential
<i>Very energy efficient - lower running costs</i>		
(92 plus) A		
(81-91) B		
(69-80) C		
(55-68) D		
(39-54) E		
(21-38) F		
(1-20) G		
<i>Not energy efficient - higher running costs</i>		
England & Wales	EU Directive 2002/91/EC	